

Job Name/Location:

Tag #:

Date:

For: File Resubmit

PO No.:

Approval Other _____

Architect:

GC:

Engr:

Mech:

Rep:

(Company)

(Project Manager)

PMBD3620 2-Port Branch Distribution Unit (BD Unit)



Performance:

| | |
|--|--------|
| Max Port Capacity Btu/h (each port) | 24,000 |
| Max Unit Capacity Btu/h (sum of ports) | 72,000 |
| Power Input (W) | 10 |

Electrical:

| | |
|-------------------------------------|--------------|
| Power Supply (V ¹ /Hz/∅) | 208-230/60/1 |
| Rated Amps (A) | 0.1 |

Piping:

Piping Connection to Outdoor Unit:

| | |
|----------------------|-----|
| Liquid Line (in, OD) | 3/8 |
| Vapor Line (in, OD) | 3/4 |

Piping Connection to Indoor Unit:

| | |
|----------------------|-------------|
| Liquid Line (in, OD) | 1/4 (Qty 2) |
| Vapor Line (in, OD) | 3/8 (Qty 2) |

Standard Features:

- Distributes refrigerant to indoor units
- Internal components are insulated
- Flare joints provided for easy installation
- Compact design

Unit Data:

| | |
|---|--------|
| Net Weight (lbs) | 13 |
| Shipping Weight (lbs) | 15 |
| Communication Cable to IDUs ² (No x AWG) | 4 x 18 |
| Communication Cable to ODUs ² (No x AWG) | 4 x 16 |

IDU - Indoor Unit ODU - Outdoor Unit

Notes:

1. Acceptable operating voltage: 187V-253V.
2. All communication cable to be minimum 18 AWG, 2-conductor, stranded, shielded and must comply with applicable local and national code.
3. Piping lengths:
 - Maximum height difference between BD unit and indoor units - 32.8 ft
 - Maximum height difference between BD unit and BD unit - 49.2 ft.
 - Maximum piping length between BD unit and indoor units - 49.2 ft
4. The BD unit should be installed inside of a building.
5. Must follow installation instructions in the applicable LG installation manual.
6. Power wiring cable size must comply with the applicable local and national code.



PMBD3620

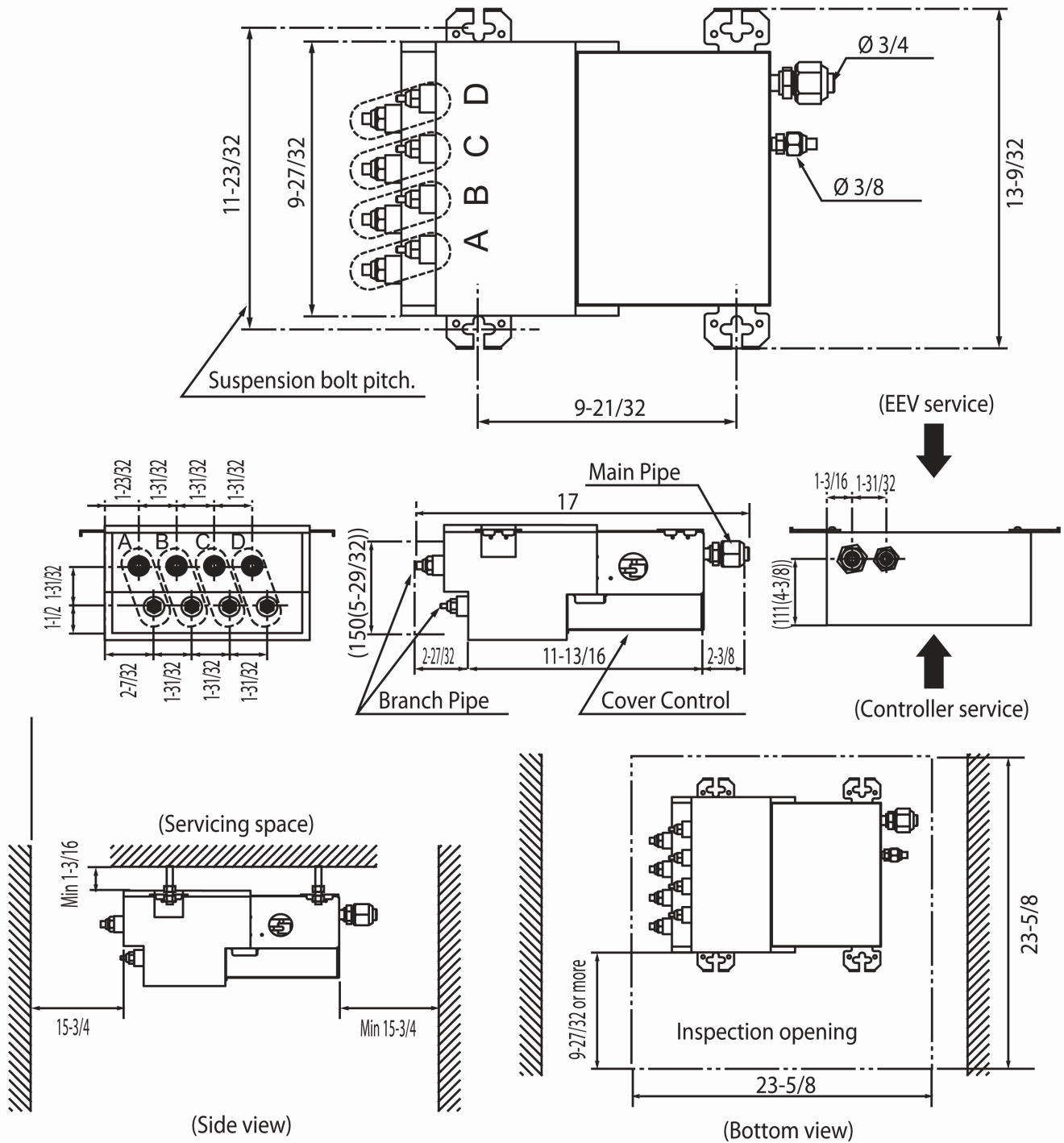
2-Port Branch Distribution Unit (BD Unit)



Tag #:

Date:

PO No.:



(EEV service)

(Controller service)

(Servicing space)

(Side view)

(Bottom view)

Unit: inch

Notes

1. For PMBD3620 unit, ports A & B are available.
2. For PMBD3630 unit, ports A, B & C are available.
3. For PMBD3640 unit, ports A, B, C & D are available.